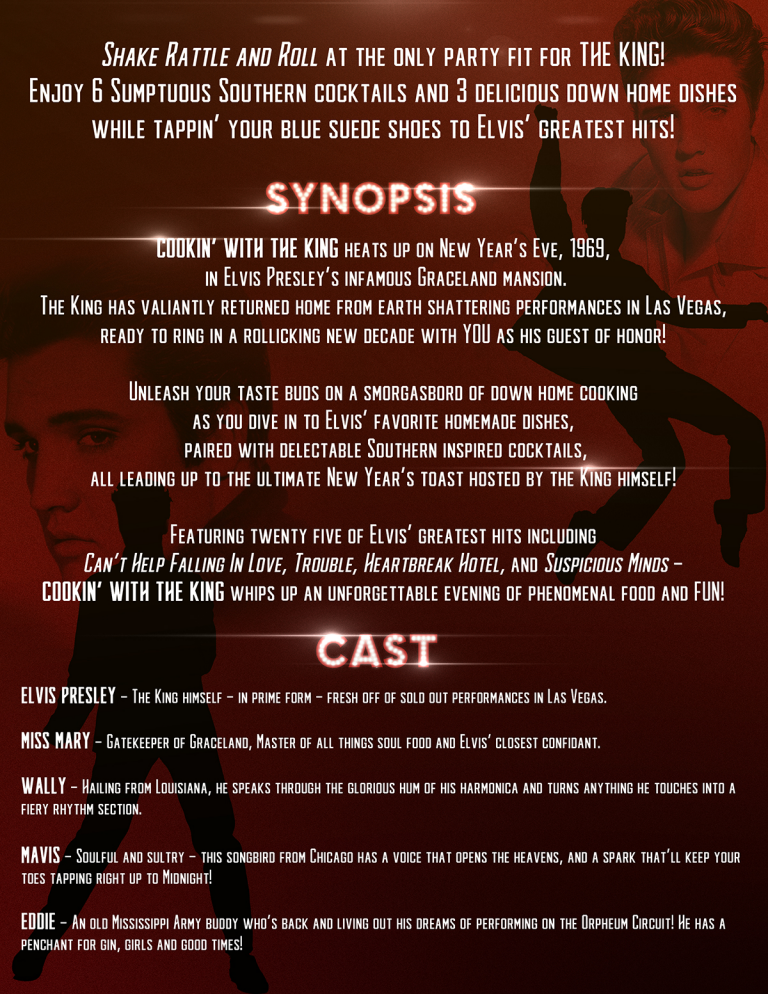


Cookin' With

THE KING



SHAKE RATTLE AND ROLL AT THE ONLY PARTY FIT FOR **THE KING!**
ENJOY 6 SUMPTUOUS SOUTHERN COCKTAILS AND 3 DELICIOUS DOWN HOME DISHES
WHILE TAPPIN' YOUR BLUE SUEDE SHOES TO ELVIS' GREATEST HITS!

SYNOPSIS

COOKIN' WITH THE KING HEATS UP ON NEW YEAR'S EVE, 1969,
IN ELVIS PRESLEY'S INFAMOUS GRACELAND MANSION.

THE KING HAS VALIANTLY RETURNED HOME FROM EARTH SHATTERING PERFORMANCES IN LAS VEGAS,
READY TO RING IN A ROLICKING NEW DECADE WITH YOU AS HIS GUEST OF HONOR!

UNLEASH YOUR TASTE BUDS ON A SMORGASBORD OF DOWN HOME COOKING
AS YOU DIVE IN TO ELVIS' FAVORITE HOMEMADE DISHES,
PAIRED WITH DELECTABLE SOUTHERN INSPIRED COCKTAILS,
ALL LEADING UP TO THE ULTIMATE NEW YEAR'S TOAST HOSTED BY THE KING HIMSELF!

FEATURING TWENTY FIVE OF ELVIS' GREATEST HITS INCLUDING
CAN'T HELP FALLING IN LOVE, TROUBLE, HEARTBREAK HOTEL, AND SUSPICIOUS MINDS -
COOKIN' WITH THE KING WHIPS UP AN UNFORGETTABLE EVENING OF PHENOMENAL FOOD AND FUN!

CAST

ELVIS PRESLEY - THE KING HIMSELF - IN PRIME FORM - FRESH OFF OF SOLD OUT PERFORMANCES IN LAS VEGAS.

MISS MARY - GATEKEEPER OF GRACELAND, MASTER OF ALL THINGS SOUL FOOD AND ELVIS' CLOSEST CONFIDANT.

WALLY - HAILING FROM LOUISIANA, HE SPEAKS THROUGH THE GLORIOUS HUM OF HIS HARMONICA AND TURNS ANYTHING HE TOUCHES INTO A FIERY RHYTHM SECTION.

MAVIS - SOULFUL AND SULTRY - THIS SONGBIRD FROM CHICAGO HAS A VOICE THAT OPENS THE HEAVENS, AND A SPARK THAT'LL KEEP YOUR TOES TAPPING RIGHT UP TO MIDNIGHT!

EDDIE - AN OLD MISSISSIPPI ARMY BUDDY WHO'S BACK AND LIVING OUT HIS DREAMS OF PERFORMING ON THE ORPHEUM CIRCUIT! HE HAS A PENCHANT FOR GIN, GIRLS AND GOOD TIMES!

ICE COLD FROM THE JUNGLE ROOM



SHAKE, RATTLE
AND ROLL



TUPELO



LOVE ME
TENDER



TROUBLE



DEVIL IN
DISGUISE



THE KING

MISS MARY'S DOWN HOME DISHES



SANDWICH SAMPLER FIT FOR A KING

ELVIS' FAMOUS FRIED PEANUT BUTTER
AND BANANA SANDWICH,
FOOLS GOLD LOAF, MONKEY BREAD



THE MAIN EVENT

PRESELY'S SUNDAY MEATLOAF WITH
CREAM CHEESE MASHED POTATOES,
SOUTHERN BAKED BEANS,
FRIED GREEN TOMATOES AND BUTTERMILK CORNBREAD



MIDNIGHT DELIGHTS

PEACH COBBLER WITH
GOLD CHAMPAGNE WHIPPED PUDDING

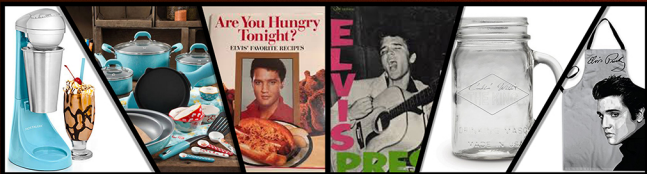
FEATURED SONGS

CAN'T HELP FALLING IN LOVE ▪ HEARTBREAK HOTEL ▪ SUSPICIOUS MINDS ▪ THAT'S ALL RIGHT
BURNIN' LOVE ▪ IF I CAN DREAM ▪ POLK SALAD ANNIE ▪ CRAWFISH ▪ DON'T BE CRUEL
A LITTLE LESS CONVERSATION ▪ SHAKE RATTLE AND ROLL ▪ LOVE ME TENDER ▪ MY BABE
BLUE SUEDE SHOES ▪ I'LL TAKE YOU THERE ▪ MAYBELLENE ▪ A HOUSE IS NOT A HOME
YOU'RE THE DEVIL IN DISGUISE ▪ SMORGASBORD ▪ TROUBLE ▪ LITTLE LIZA JANE
MUNCHIES MEDLEY: HOT DOG, BLUEBERRY HILL, DO THE CLAM, ITO EATS, MY DESERT SERENADE, TUTTI FRUTTI

PARTNERSHIPS



MERCHANDISING OPPORTUNITIES



VINTAGE APPLIANCES, VINTAGE COOKWARE, VINTAGE COOKBOOKS, ALBUMS, BRANDED GLASSWARE, APRONS

TIMELINE

NEW YORK READING – 6-8 WEEKS FROM DATE OF SIGNING

STAGED PRODUCTION, MUSIC TRACKS, DESIGN – 8-12 WEEKS FROM DATE OF SIGNING

PRODUCTION NEEDS

MARKETING – LOGO, PITCH DECK, COLLATERAL, ONLINE OUTREACH, SOCIAL MEDIA

CAST – 3M/3F ACTORS

MUSIC TRACKS – LIVE MUSICIANS AND STUDIO TRACKS

DESIGN – SCENIC, PROPS, COSTUMES, SOUND, (LIGHTING WILL VARY WITH VENUE)

MERCHANDISE – BASIC SAMPLES SHOULD BE PREPARED DURING THE SCRIPT WRITING PROCESS

VIABLE MARKETS AND PARTNERSHIP VENUES

